




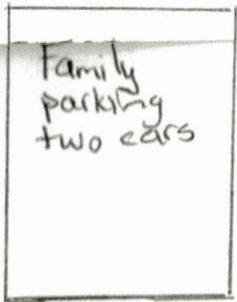
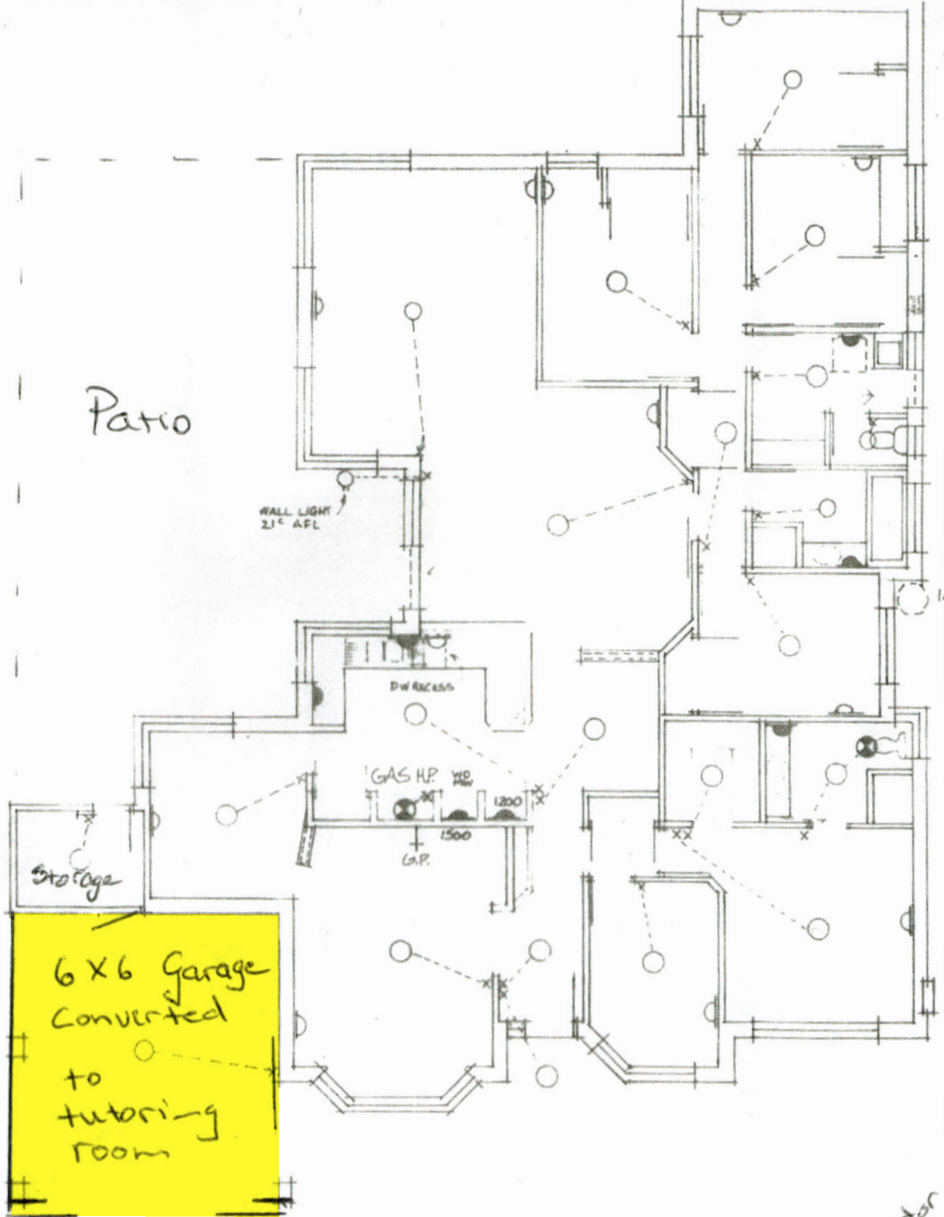
The City of Gosnells provides the information contained herein. The Council of the City of Gosnells shall not be liable for any loss or damage howsoever caused as a result of reliance upon information contained in these documents.

 = **Subject Property**

Date: 17/04/2024

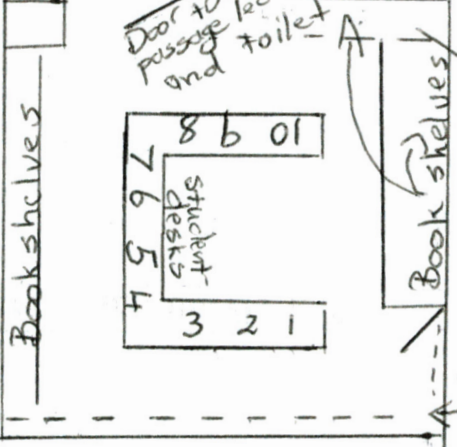
Scale: 1:800





7500

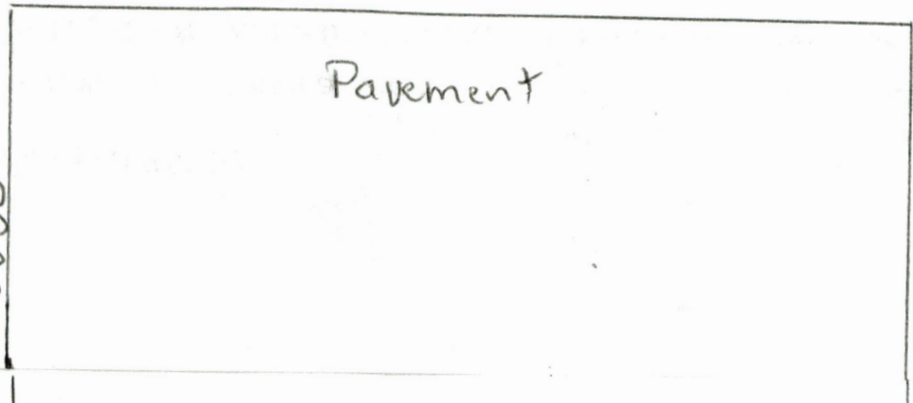
Tutoring Room Set up



Door to leading to storage/patio facilities.

television
printers

Sliding glass door side.
Sliding glass doors in front

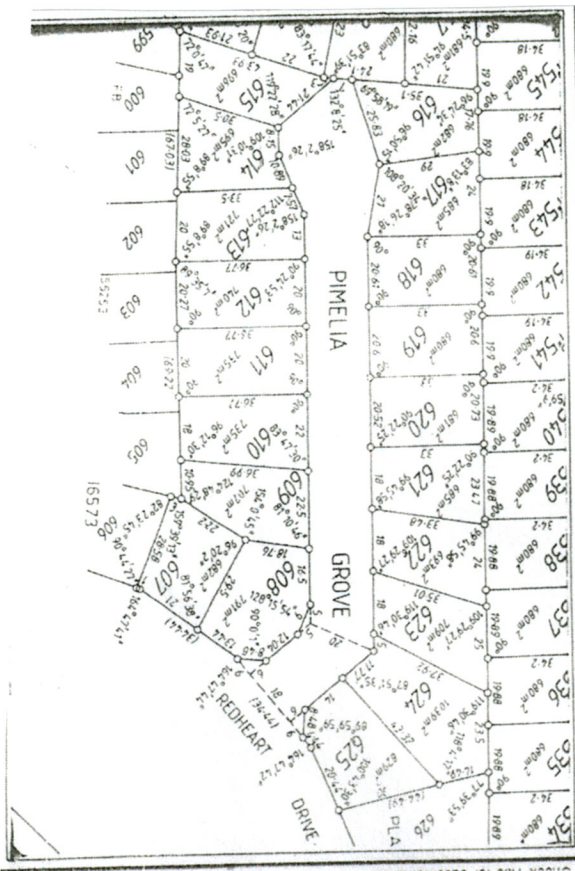


Pavement

6000

Lot 611 PIMELIA GR THORNLE Loc. Auth. GOSNELLS

Plan/Cha. XXX 16574 Vol/Folio Loc. CANNING LOC 17





Double garage converted to tutoring room 6x6m with additional storage room attached

Average car width 1475mm to 1665mm

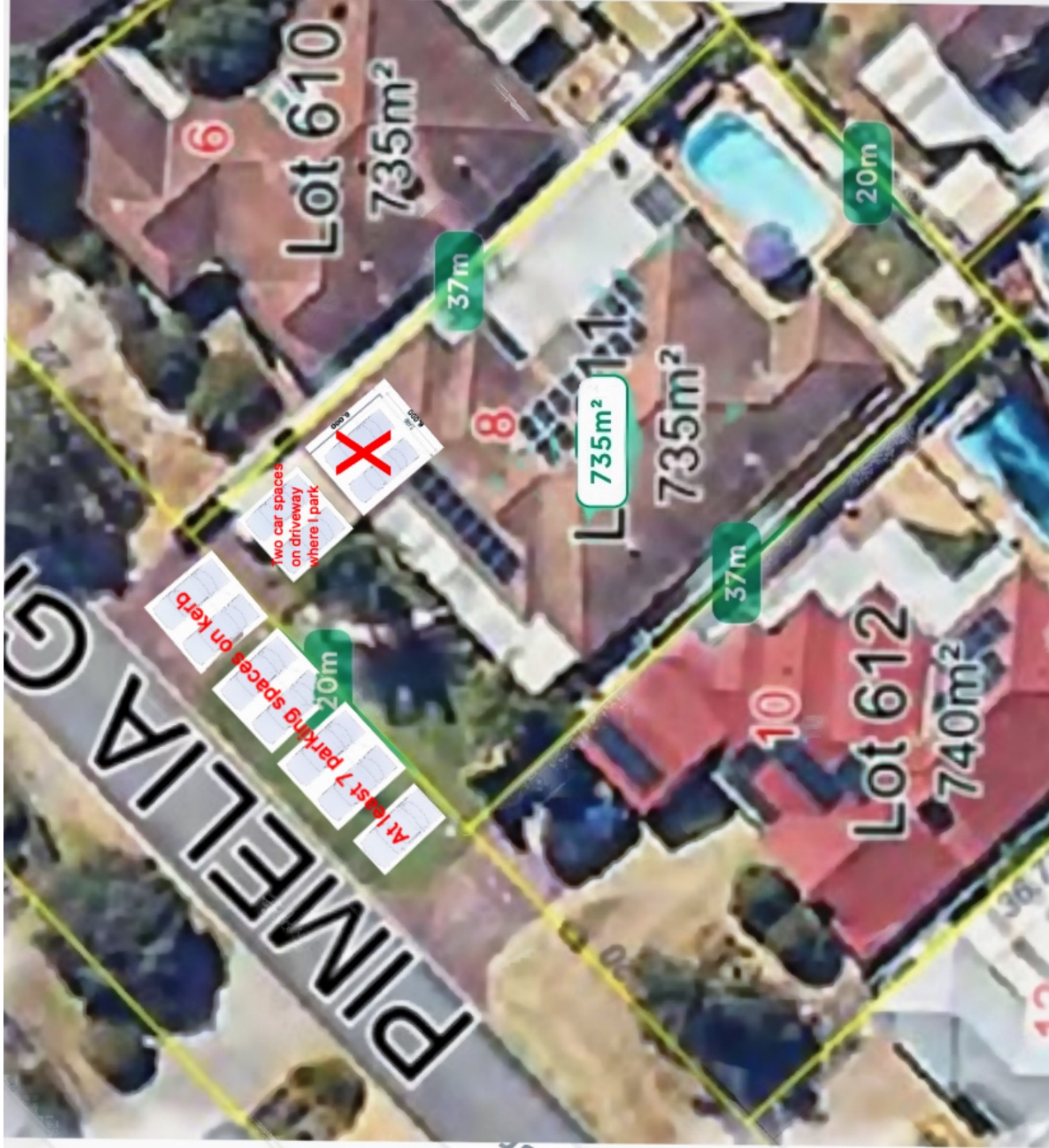
Front measurement of kerb width: 20 m

This should mean that at least 7 cars could park comfortably.

Average car length is 2695mm to 3665mm.

The verge space in front of the home is 6 m

This means parking cars in that space will leave at least another meter before entering the street



Proposed Tutoring Sessions at 8 Pimelia Grove, Thornlie

| | | |
|--|---|---|
| Mondays | Groups vary in size - (4 -10) Some are siblings and others car-pool, so it is not one student per car. | Traffic of about five cars, stopping to pick up or drop off. Also note that there is about two hours of no traffic while sessions are on. |
| Session 1: 4.30-6.40 pm Primary 4:20-4.30 4.30-4.40 | Group 1: Drop off Group 2: Drop off | <i>When spread out like this, there will be two/three cars at most at the same time.</i> 20 minutes |
| 6.30 - 6.40 6.40 -6.50 | Group 1: Pick up Group 2: Pick up | 20 minutes |
| Session 2: 7-9 pm Secondary | Secondary students usually arrive in a scattered pattern already as they come from other activities and join the class when they can. | |
| 9- 9.10 pm 9.10 - 9.20 | Pick up group 1 Pick up group 2 | 20 minutes |
| Tuesdays | | |
| Session 1: 4.30-6.40 pm Primary 4:20-4.30 4.30-4.40 | Group 1: Drop off Group 2: Drop off | 20 minutes |
| 6.30 - 6.40 6.40 -6.50 | Group 1: Pick up Group 2: Pick up | 20 minutes |
| Session 2: 7-9 pm Secondary | Secondary students usually arrive in a scattered pattern already as they come from other activities and join the class when they can. | |
| 9- 9.10 pm 9.10 - 9.20 | Pick up group 1 Pick up group 2 | 20 minutes |
| Thursdays | | |
| Session 1: 4.30-6.40 pm Primary | | |

| | | |
|--|---|--|
| 4:20-4.30 4.30-4.40 | Group 1: Drop off Group 2: Drop off | 20 minutes |
| 6.30 - 6.40 6.40 -6.50 | Group 1: Pick up Group 2: Pick up | 20 minutes |
| Session 2: 7-9 pm Secondary | Secondary students usually arrive in a scattered pattern already as they come from other activities and join the class when they can. | |
| 9- 9.10 pm 9.10 - 9.20 | Pick up group 1 Pick up group 2 | 20 minutes |
| Saturday | | |
| Session 1 9-11am Primary | | |
| 8.50- 9.00 9.00-9.10 | Group 1: Drop off Group 2: Drop off | 20 minutes |
| 11.00-11.10 11.10-11.20 | Group 1: Pick up Group 2: Pick up | 20 minutes |
| Session 2 11.30 am -1.30 pm Primary 11.20 -11.30 am 11.30 -11.40 am | Group 1: Drop off Group 2: Drop off | 20 minutes |
| 1.30 -1.40 pm 1.40- 1.50 pm | Group 1: Pick up Group 2: Pick up | 20 minutes |
| Session 3 2 pm -4 pm Secondary | Secondary students usually arrive in a scattered pattern already as they come from other activities and join the class when they can. | <i>Again, there is usually no more than about 3 cars at a time for secondary students: some parents drop of 4 students, which means one car.</i> |
| 4.00-4.10 pm 4.10-4.20 pm | Pick up group 1 Pick up group 2 | 20 minutes |

Please note:

There are no tutoring sessions on Wednesdays, Fridays and Sundays. This means **three days per week without any tutoring traffic.**

There are also no tutoring sessions over the school holidays which means **about three months of no tutoring traffic.**